

# PVS&SVS SYSTEM

## TROUBLESHOOT WIRELESS CONTROLLER SAS916FCT-RF

MOST COMMON  
ISSUE IS  
BATTERY RUNS  
QUICKLY  
HERES THE  
SOLUTION

MOST BATTERY  
LAST A YEAR



FAULT 1 SIGNAL FLASH  
CONTROLLER NOT CONNECT  
TO RECEIVER  
SOLUTION : CHECK POWER OF  
THE RECEIVER  
CONSTANT FLASHING IT WILL  
DRAIG  
BATTERY LIFE WITHIN  
1-2WEEKS

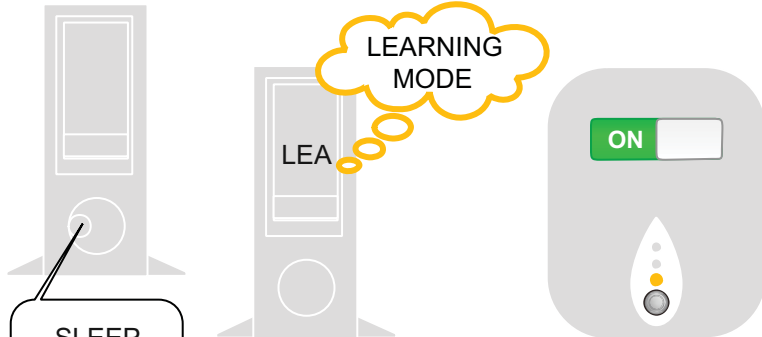
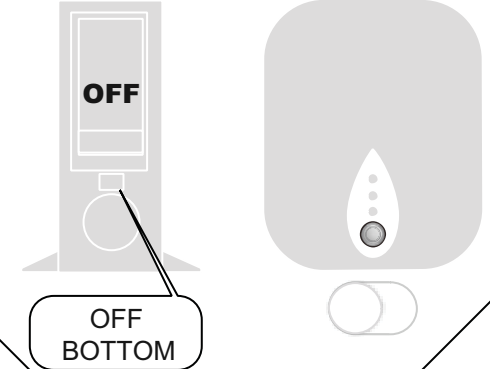


FAULT 2 SIGNAL GONE OR  
POWER ON BOTH, BUT STILL  
FLASHING  
LOSS CONNECT TO RECEIVER

STEP 1 TAKE OUT BATTERY  
LEAVE FOR FEW MIN PUT IT  
BACK USUALLY RESET THE  
REMOTE .

STEP 1 NOT WORK  
STEP 2 RESET RECEIVER TO  
REMOTE

1.TURN OFF POWER THE RECEIVER  
AND CONTROLLER

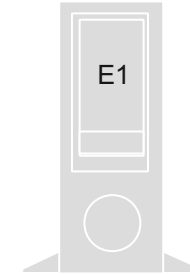


STEP2

REMOTE: LONG PRESS SLEEP BOTTOM IT WILL  
SHOWS LEA (LEARING MODE)  
RECEIVER:QUICKLY LONG PRESS ON BOTTOM ,  
IT MUST SHOWS IN ORANGE  
THEN THEY ARE START TO MATCH



AFTER 3-5S REMOTE:  
SHOWS 1 MATCH UP  
SUCESS,NOW REMEMBER THE  
RECEIVER WILL TURN OFF AGAIN  
YOU NEED TO PRESS IT ON TO  
MAKE IT WORK TEST ALL SPEED  
AND FUNCTION WHILE YOU UP IN  
THE ROOF SPACE



ERROR IF SHOWS E1 MATCH FAULT  
THEN REPEAT THE PROCESS  
AGAIN TILL SHOW 1  
AFTER 3-4 TIME TRY OUT STILL E1  
TAKE OUT REMOTE'S BATTERY  
LEAVE FOR FEW MIN PUT BACK  
AND REPEAT AGAIN  
ANY QUESTION CONTACT US ON  
09-2762745 QUUCKY