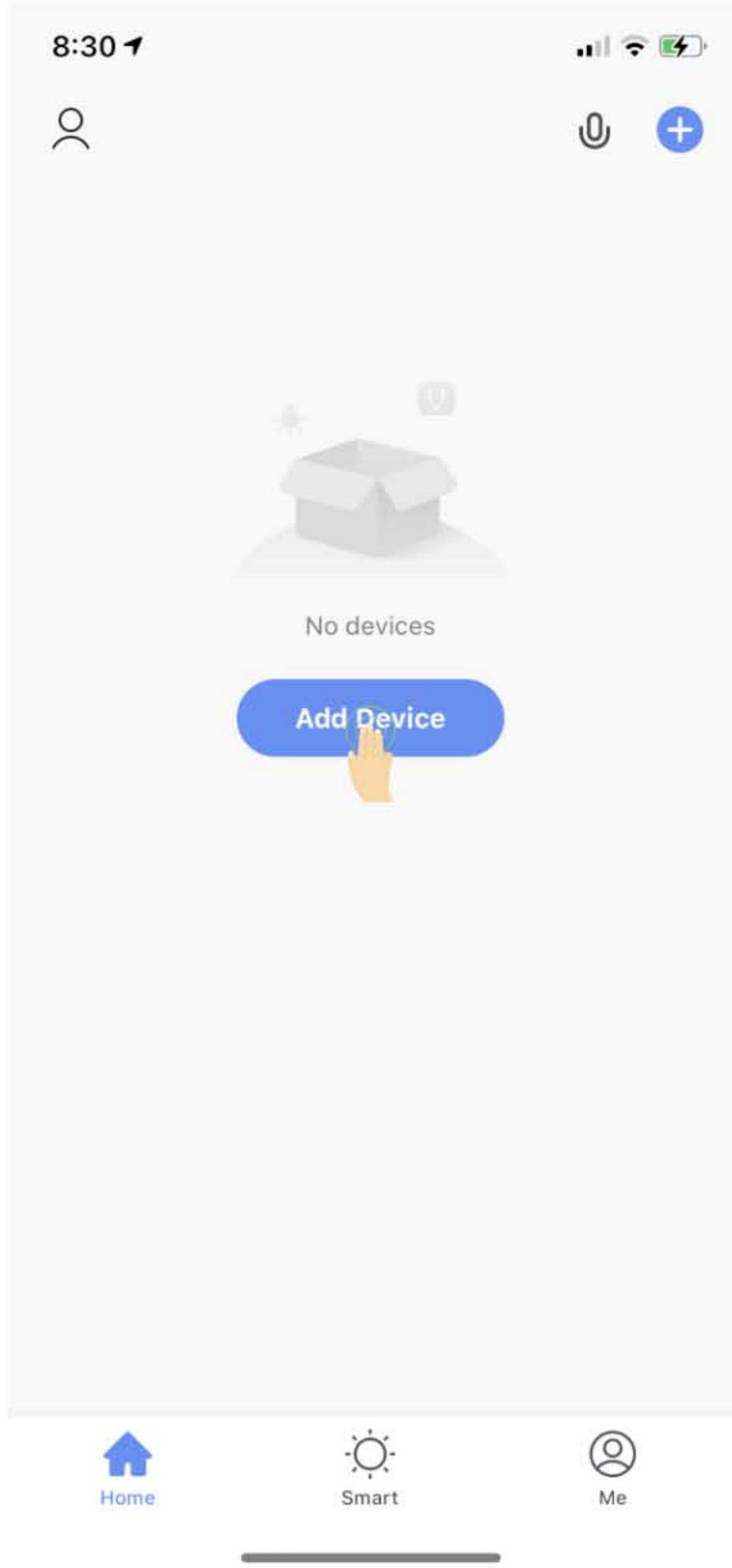
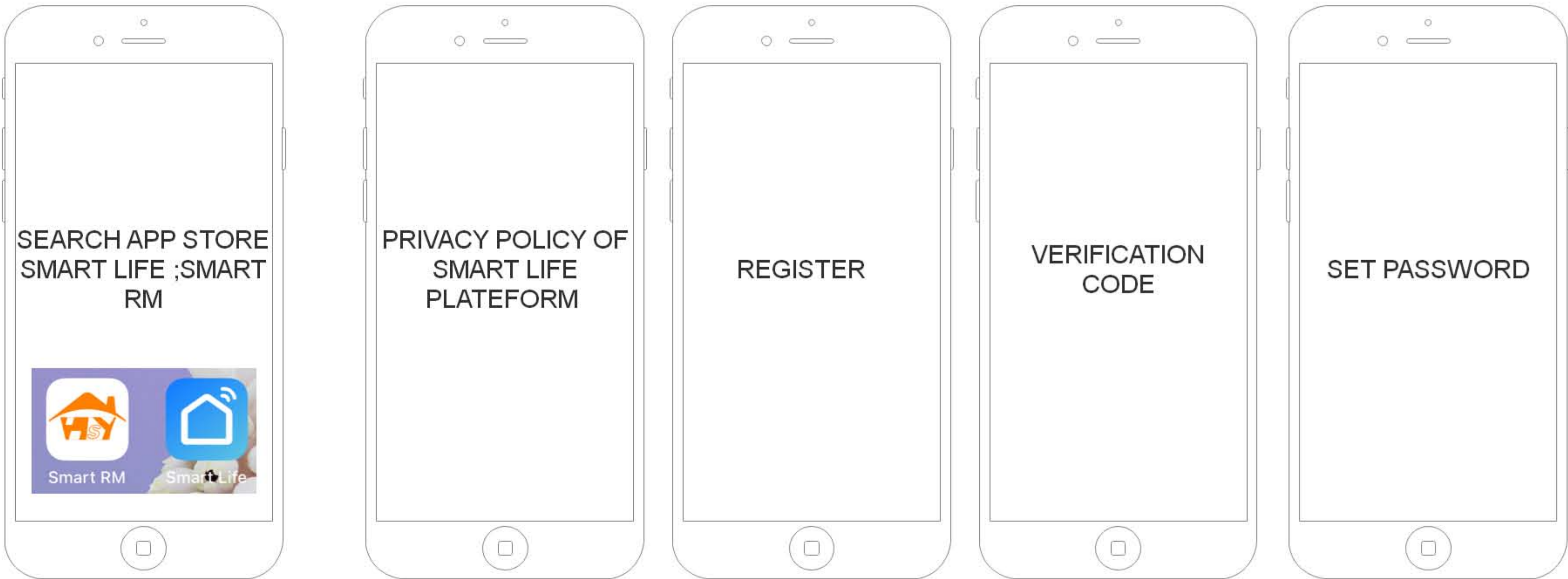
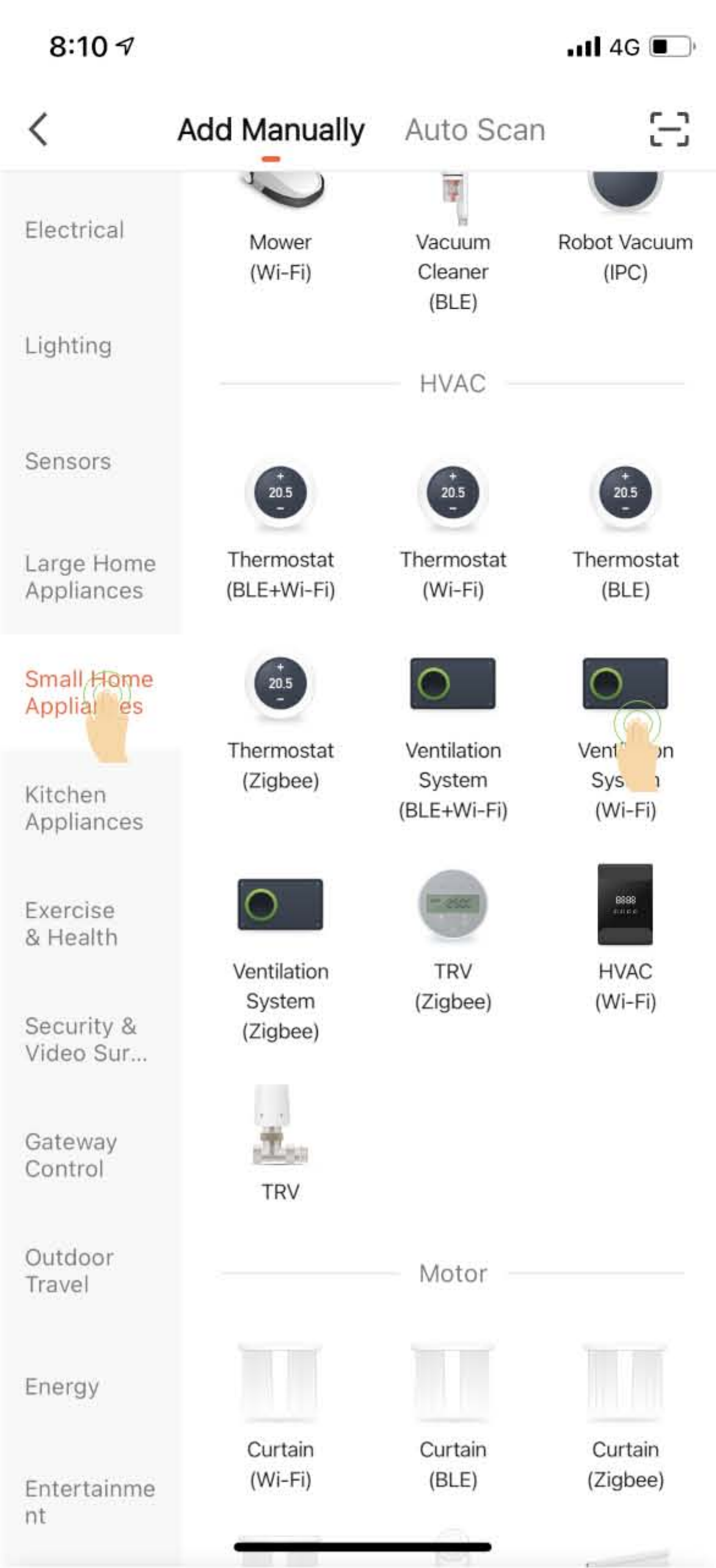


PVS WIFI SET UP SMART LIFE/TUYA SMART

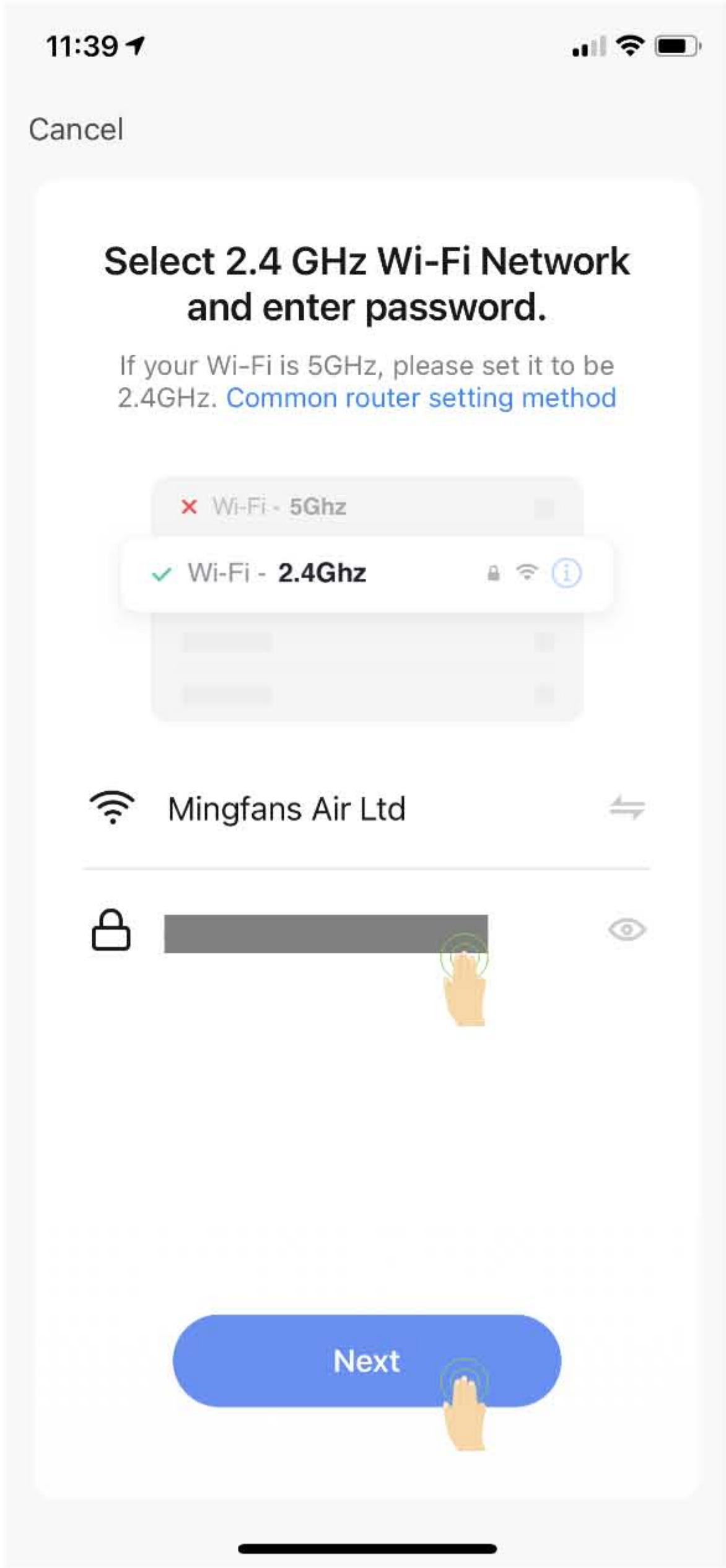


AFTER DOWNLOAD APP SMART LIFE FROM APP STORE  
FILL UP THE REGISTRATION  
LET'S START TO ADD ON YOUR DEVICE

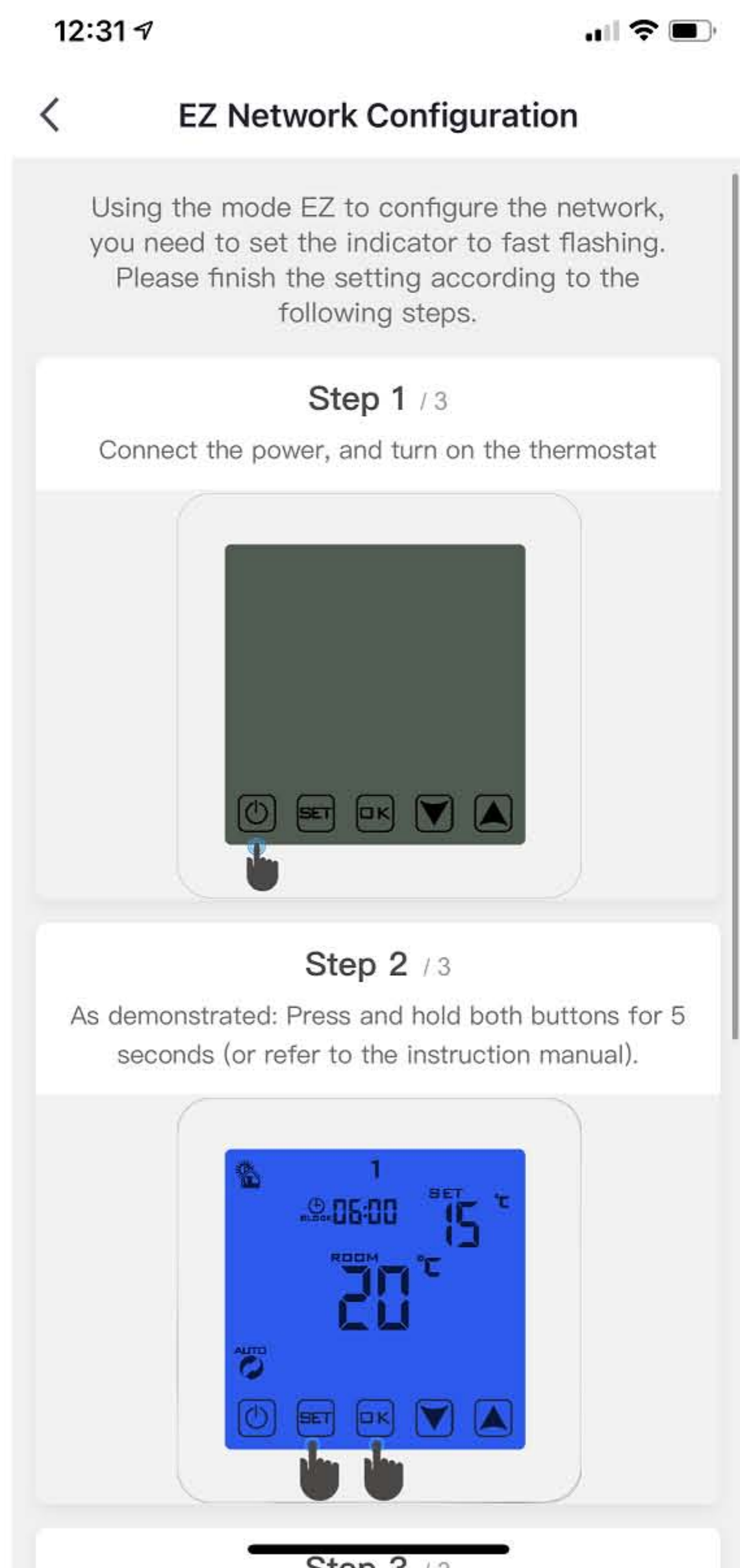
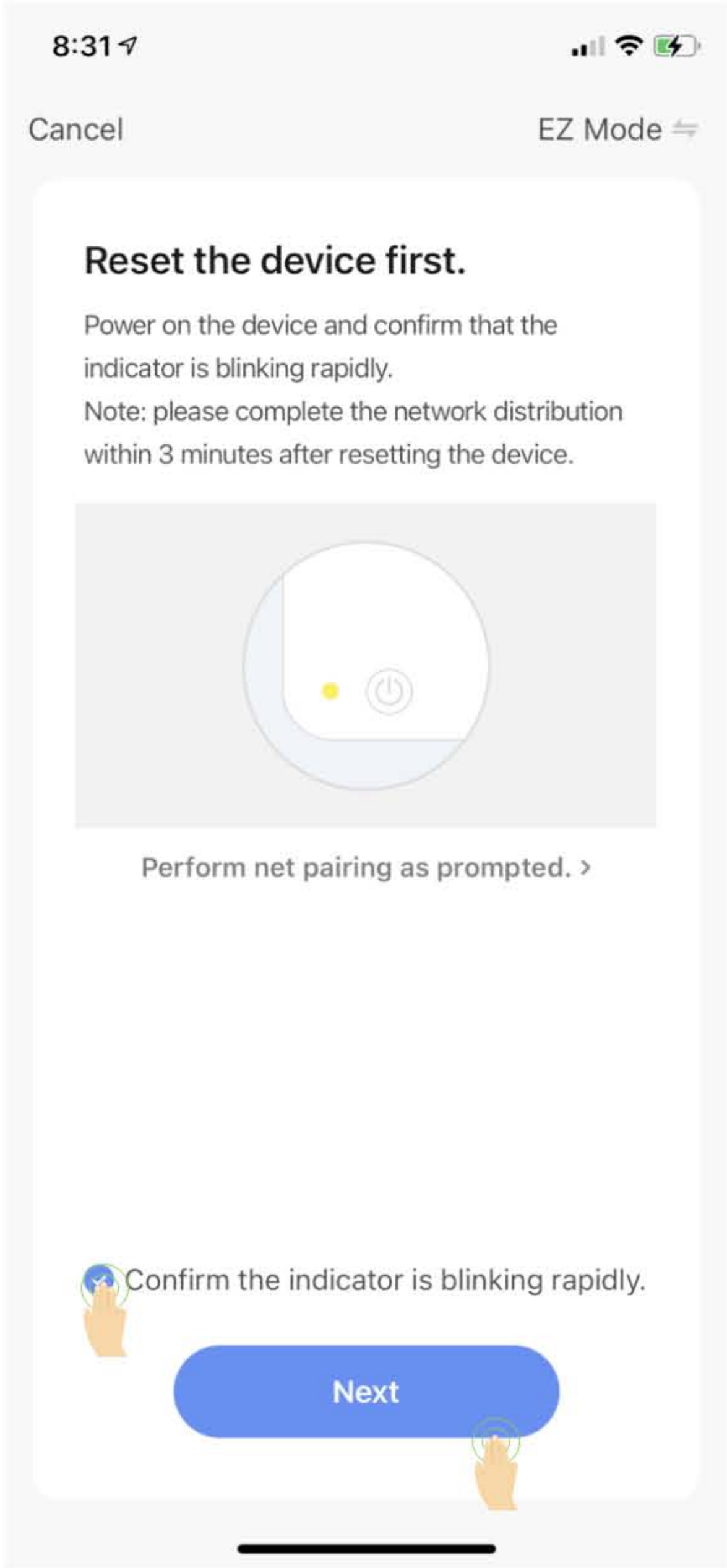
STEP 1 PRESS ADD +



STEP 2 PRESS:  
THERMOSTAT ICON



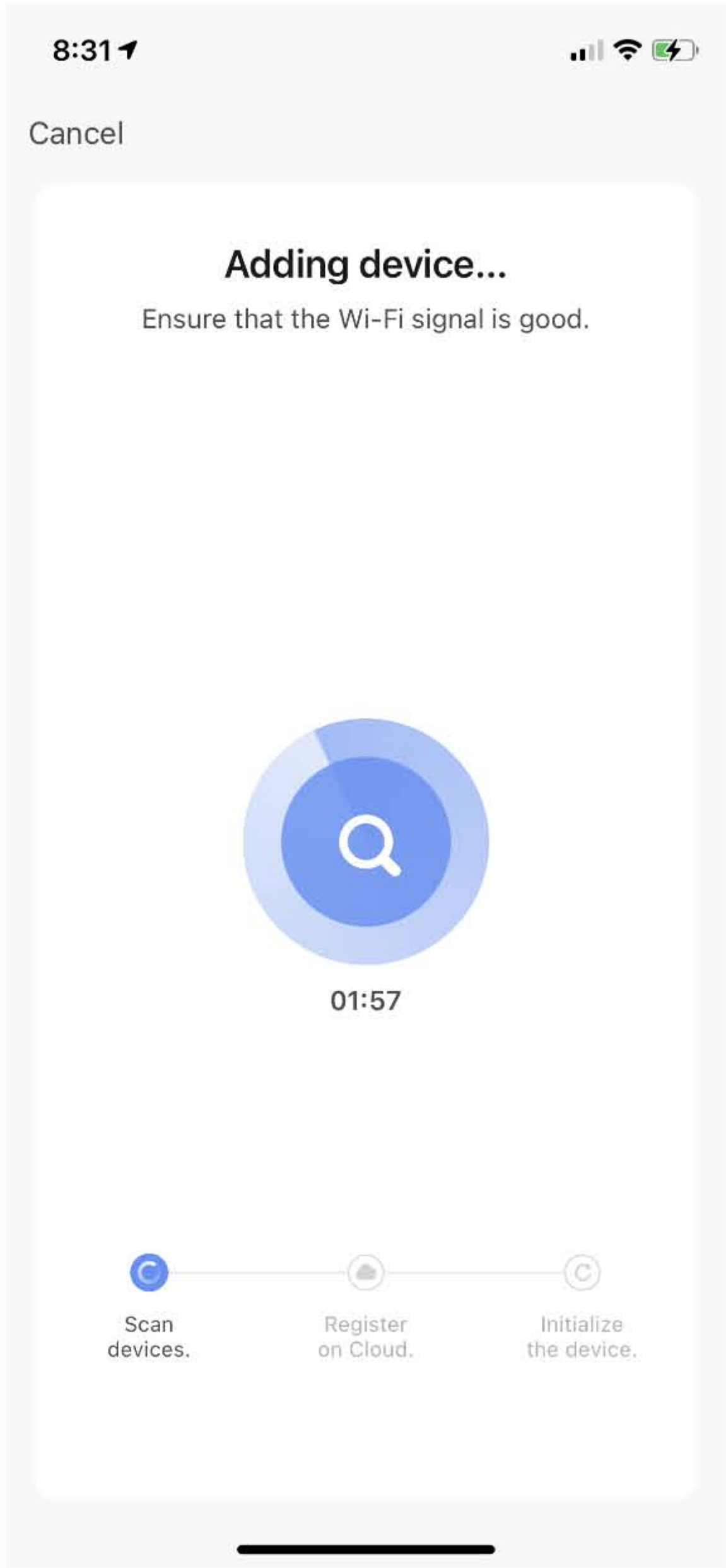
STEP 3&3B: PLS PUT IN YOUR WIFI PASS WORD MAKE SURE ITS 2.4GHZ NOT 5GHZ .FEEL FREE TO READ STEP 4 &5 TO ACTIVE WIFI THEN PRESS CONFIRM



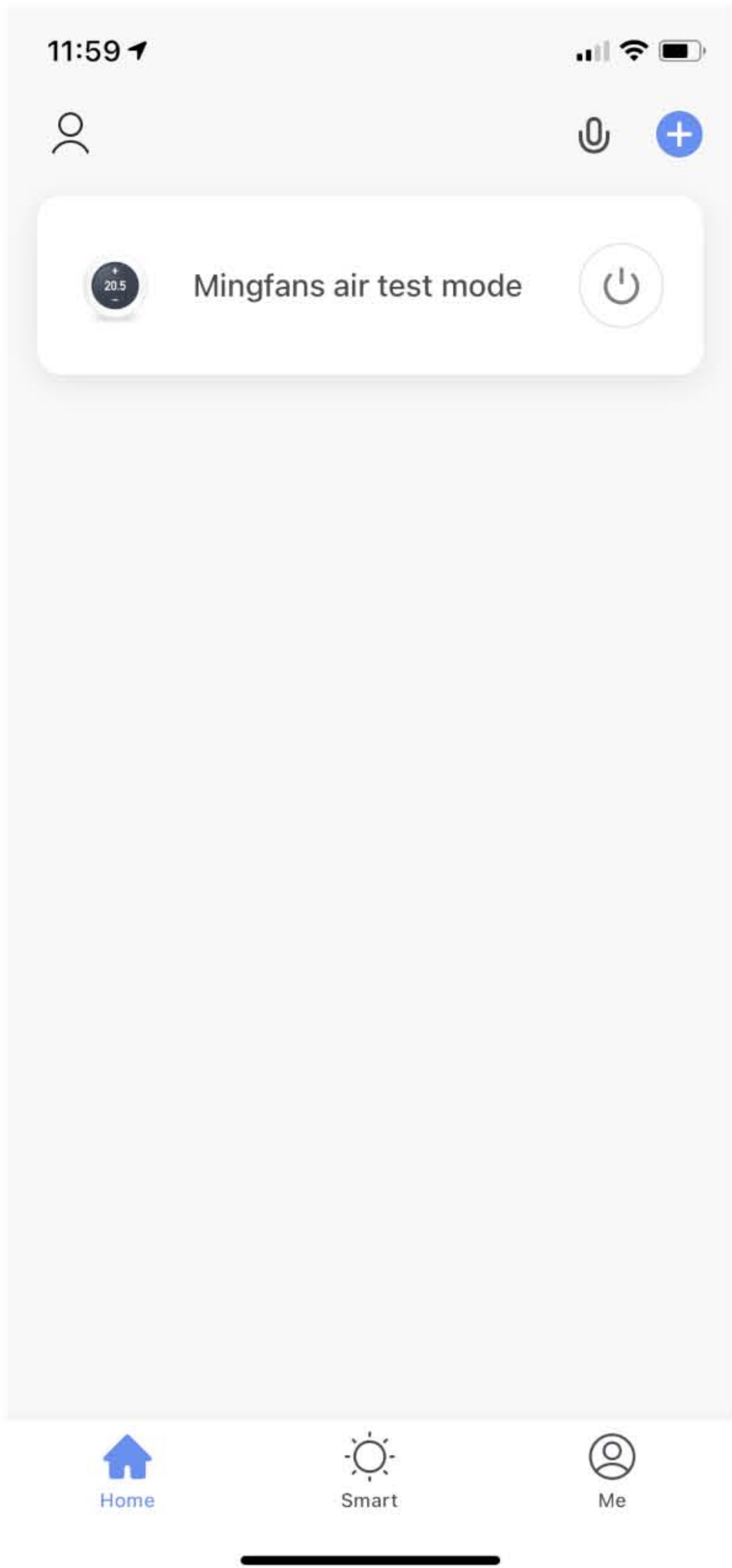
STEP 4 HOW TO ACTIVE WIIF ON CONTROL PANEL



STEP 5 HOW TO ACTIVE WIIF ON CONTROL PANEL



AUTO SET UP MAY TAKE 2MIN  
PLS NOTES WIFI ON 2.4G ONLY  
5G NOT ACCEPTABLE



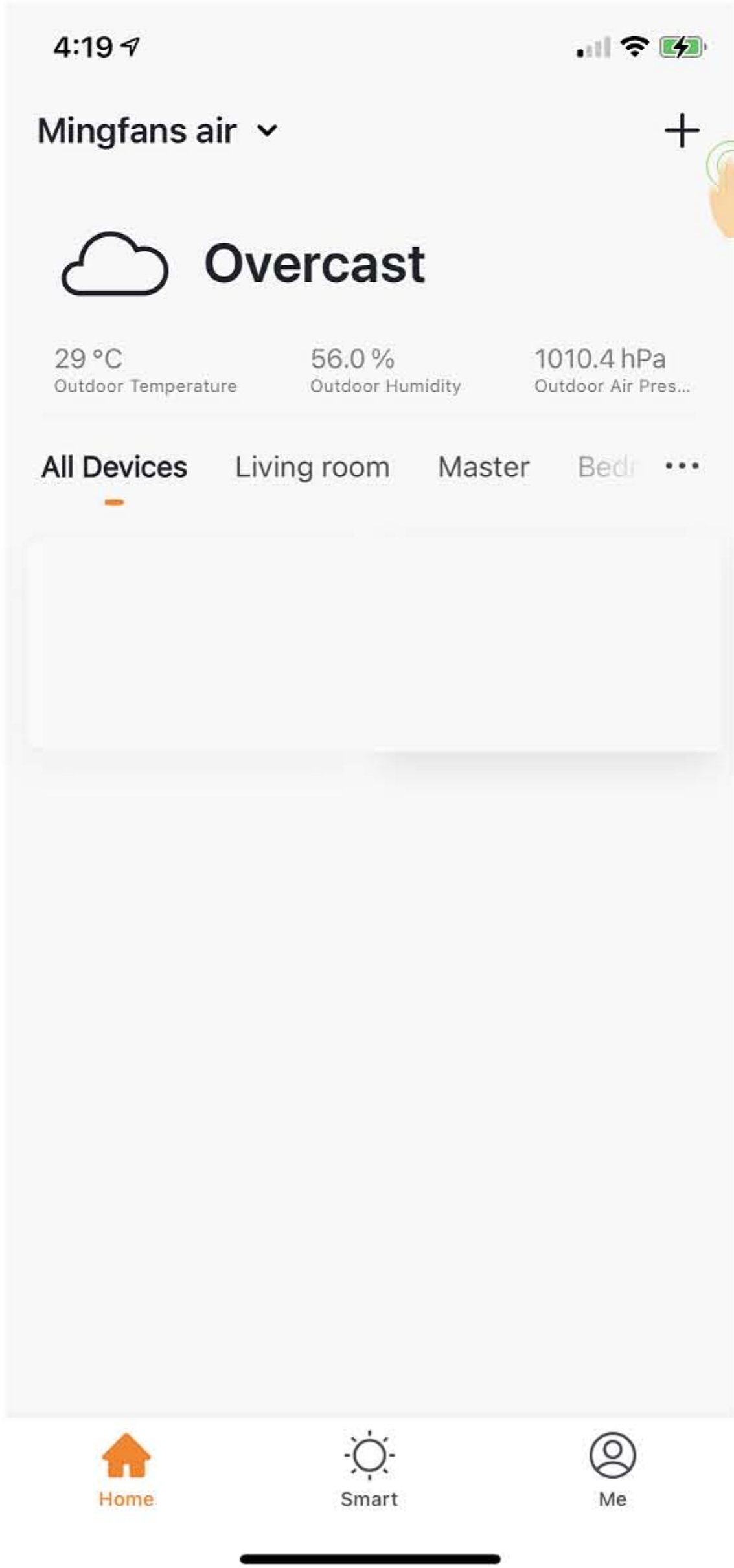
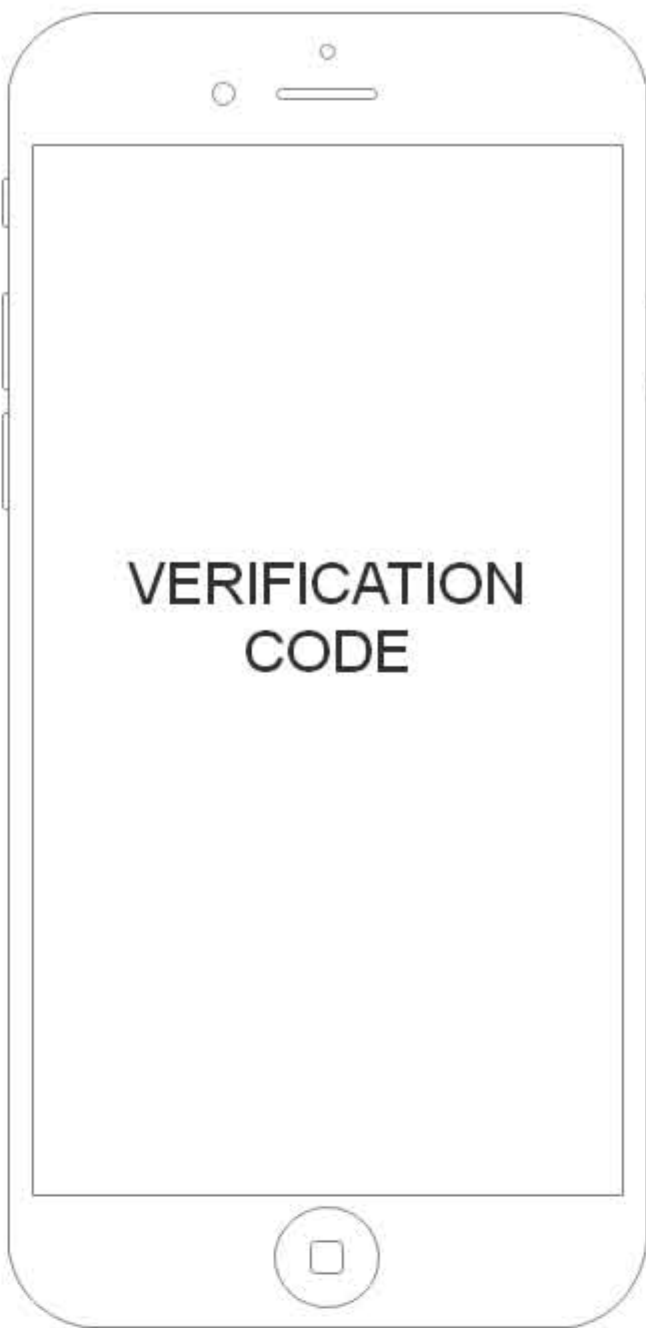
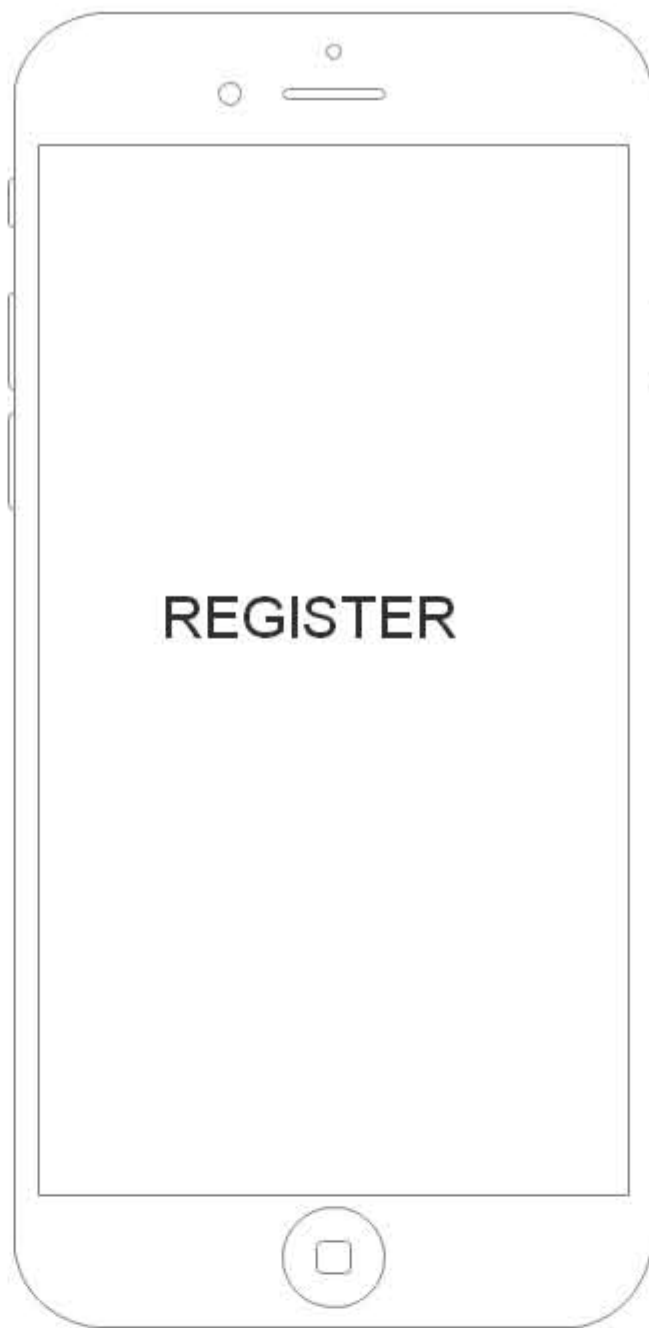
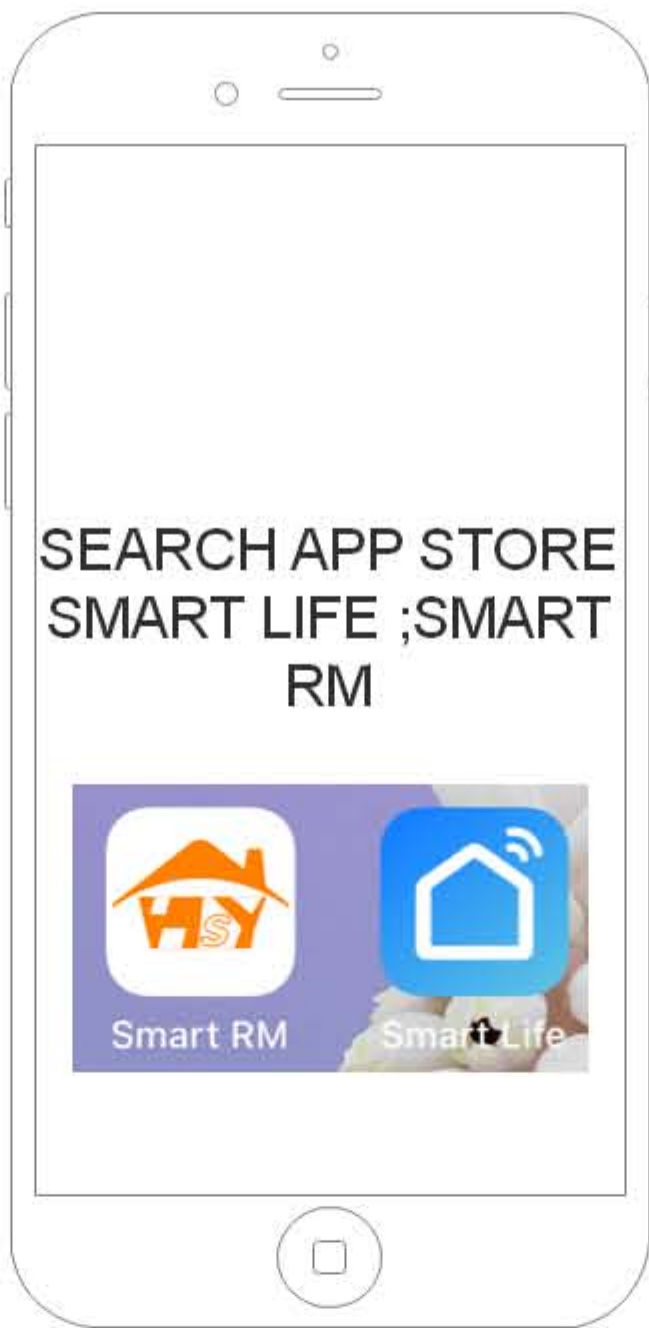
ALL DONE READY TO USE



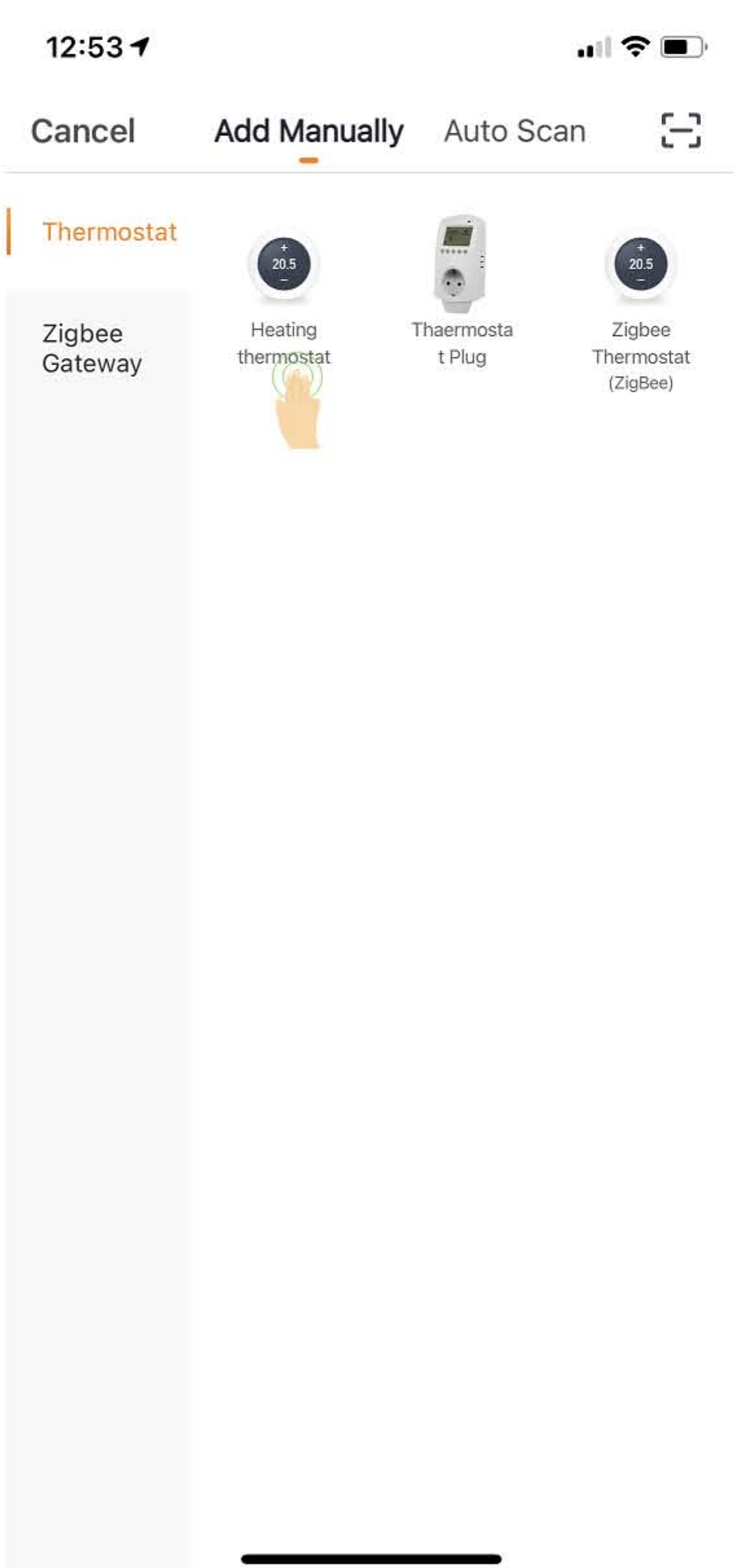
PVS WIFI SET UP SMART RM



SCAN & WATCH ON YOUTUBE WIFI SET UP



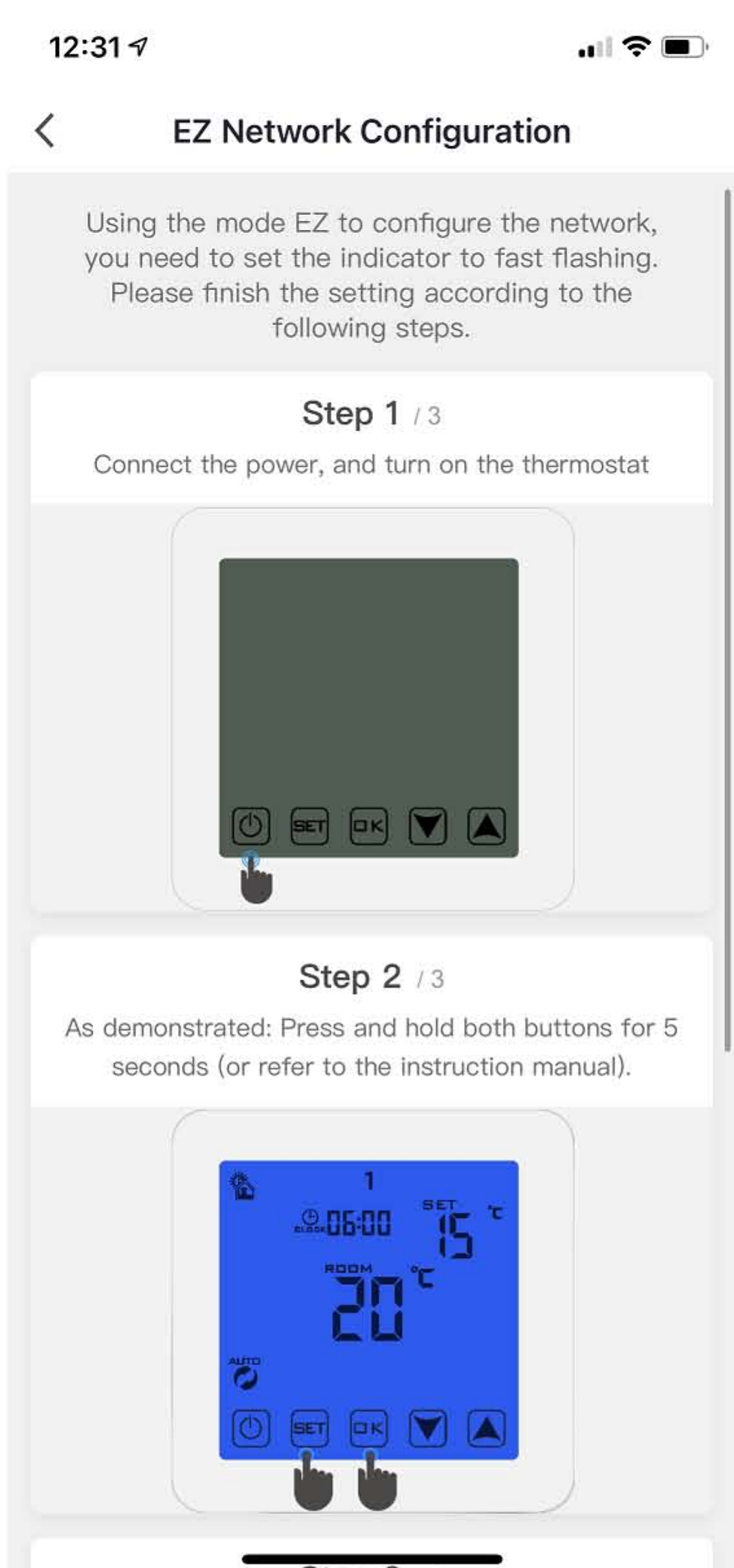
AFTER DOWNLOAD APP SMART LIFE ;SMART RM FROM APP STORE FILL UP THE REGISTRATION LET'S START TO ADD ON YOUR DEVICE



STEP 2 PRESS: THERMOSTAT ICON



STEP 3: FEEL FREE TO READ STEP 4 &5 TO ACTIVE WIFI THEN PRESS CONFIRM



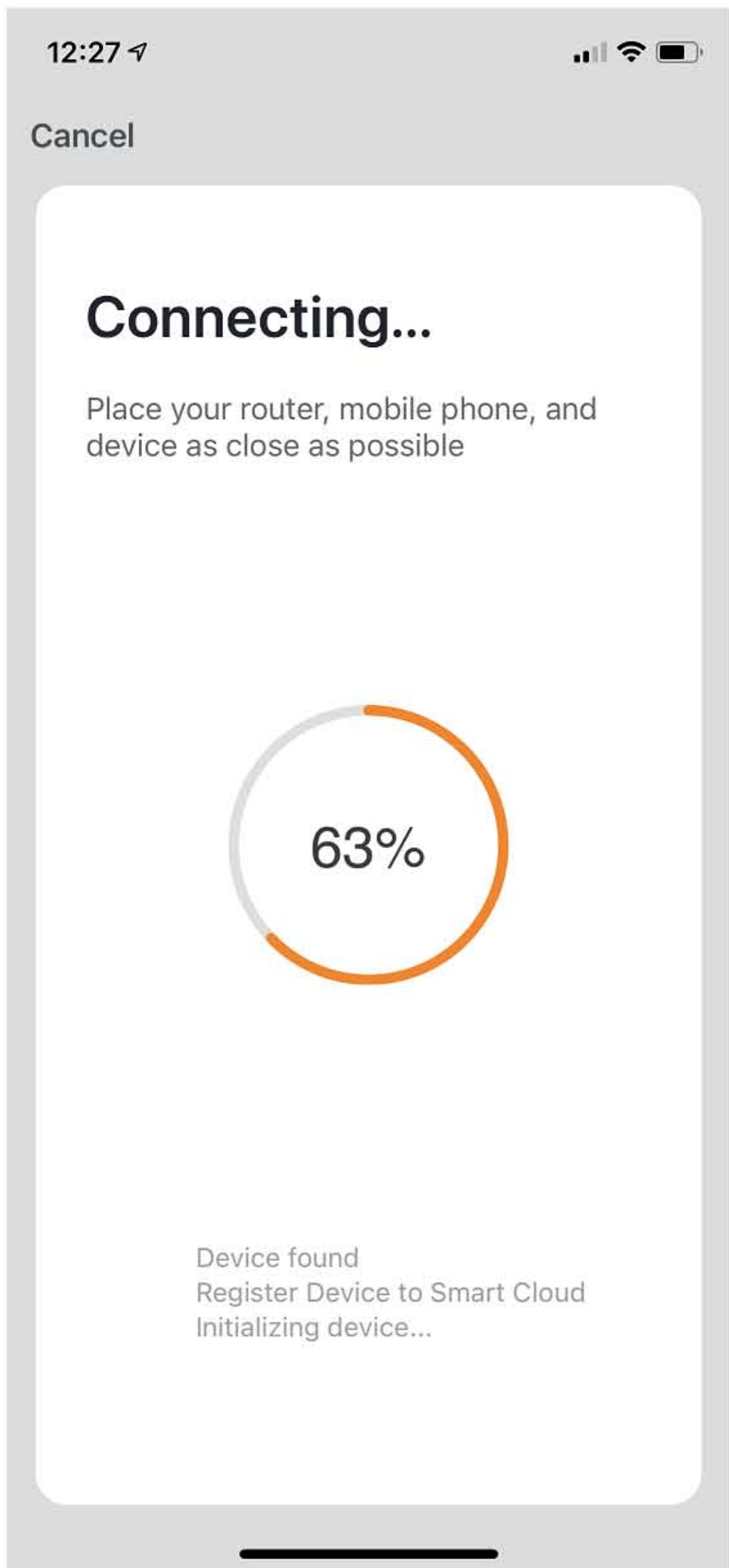
STEP 4 HOW TO ACTIVE WIIF ON CONTROL PANEL



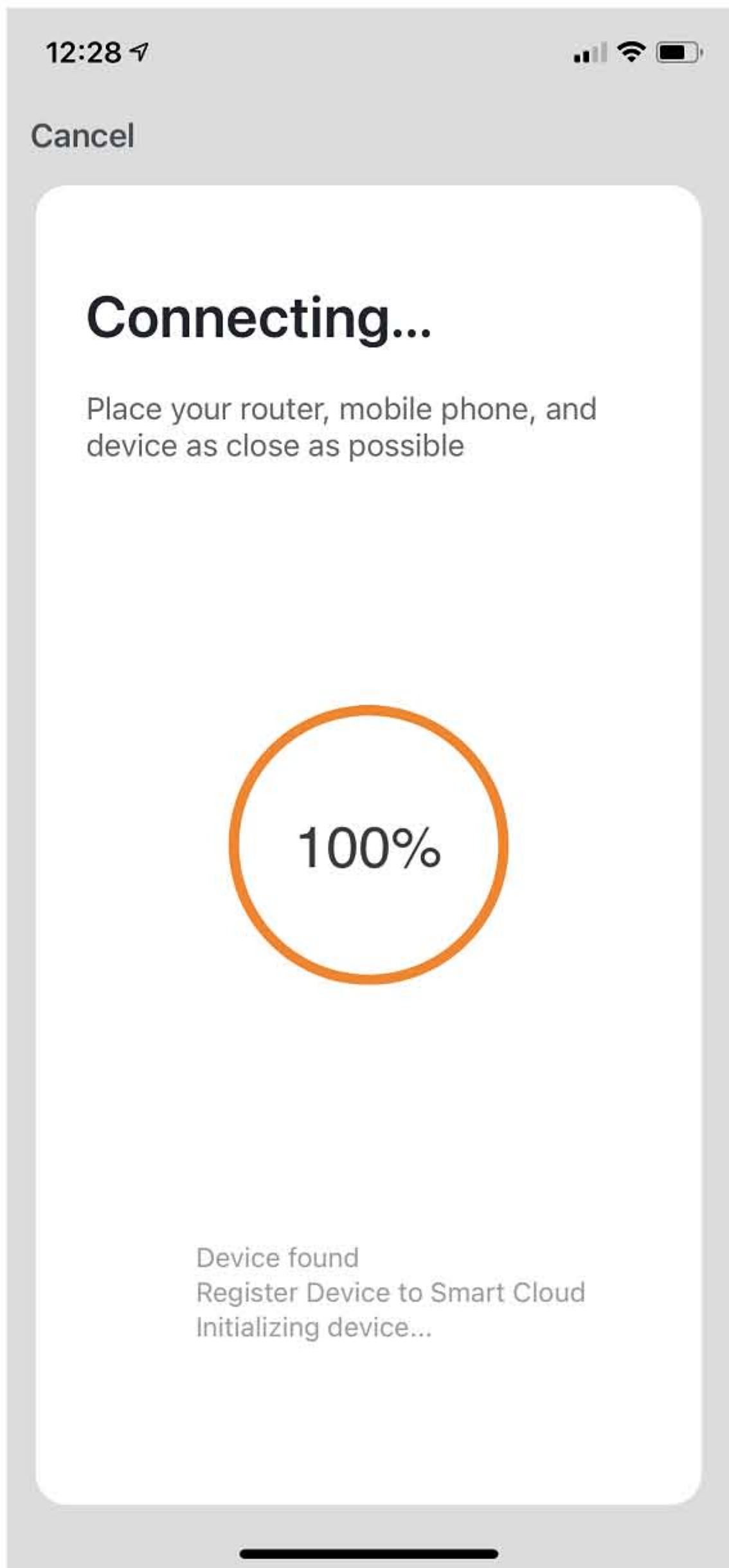
STEP 5 HOW TO ACTIVE WIIF ON CONTROL PANEL



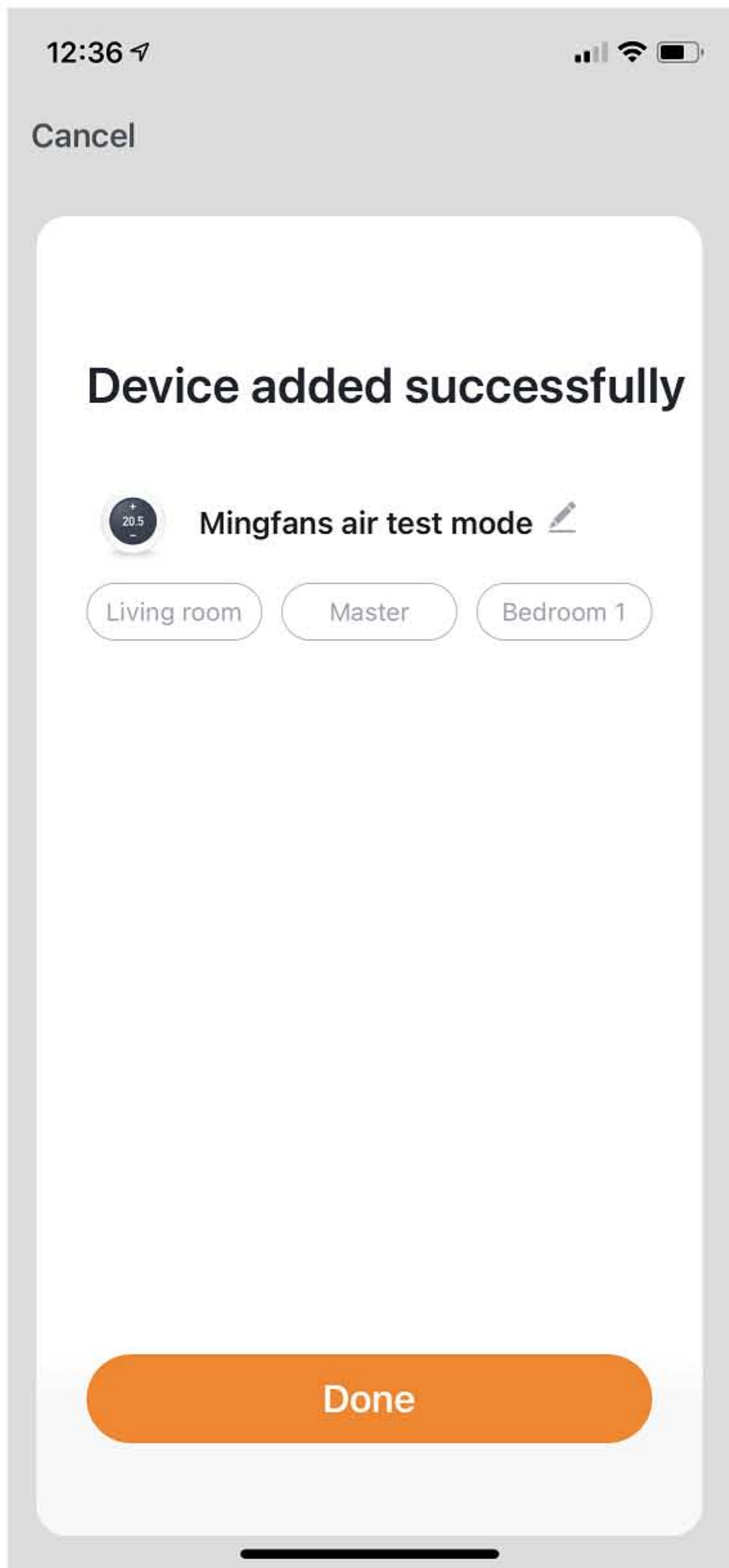
STEP 6 ENTER YOUR OWN WIFI PASSWORDS



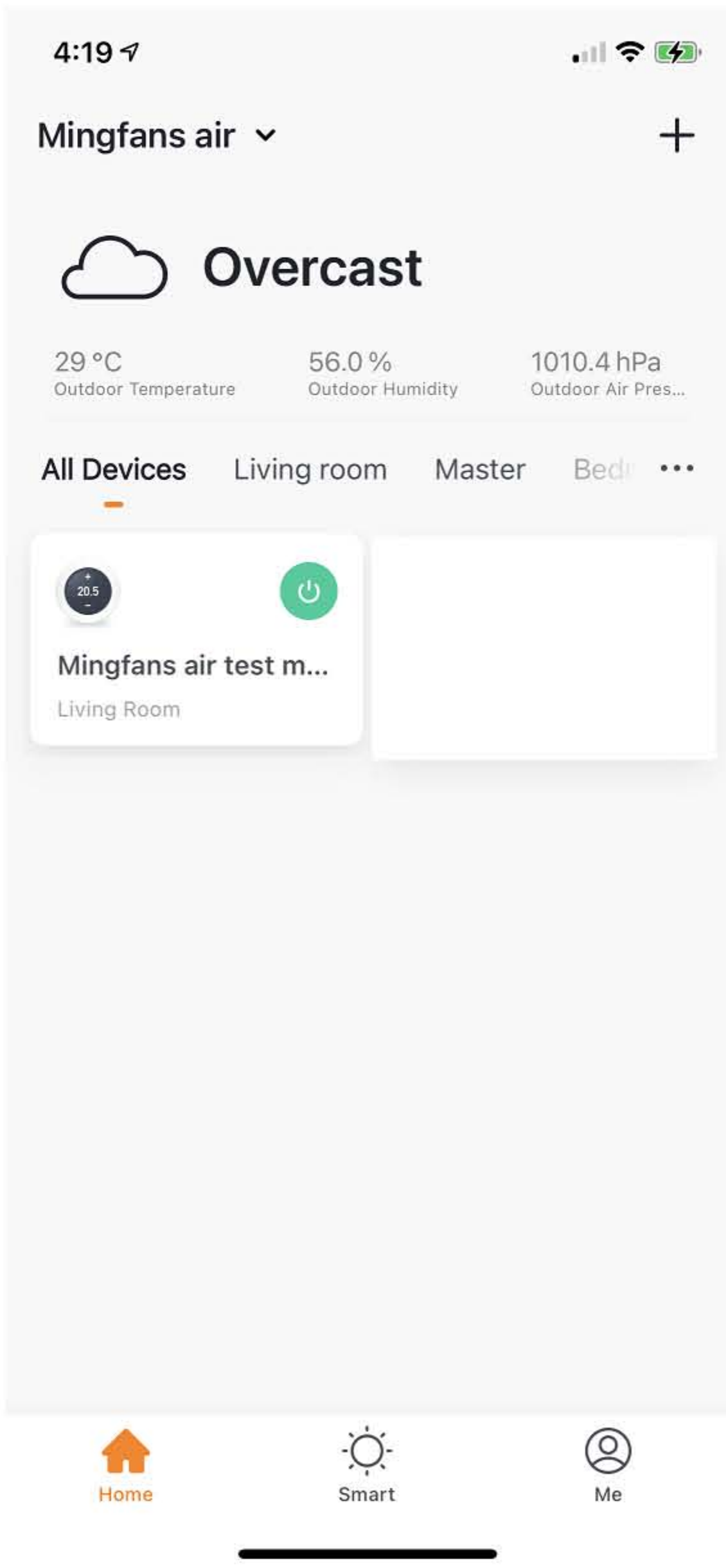
AUTO SET UP % PLS NOTES WIFI ON 2.4G ONLY 5G NOT ACCEPTABLE



AUTO SET UP 100%



ALL DONE



YOUR DEVICE HAS ADD ON APP YOU CAN ADD ON AS MANY SMART WIFI AS YOU WANT



# PVS APP PANEL FUNCTION

Mode control

Cooling	
Heating	
Ventilate	<input checked="" type="checkbox"/>
cooling heating automatically	
Done	

MODE CONTROL

4:06

< Back Mingfans air test mode

Program

15.0 °C

-

+

Ventilate Low wind

Current Temperature 28.0°C

Switch Mode Sleep mode Settings

mode selection

Manual	<input checked="" type="checkbox"/>
Program	
Done	

7 DAYS PROGRAM /  
MANUAL

Sleep mode

Sleep mode ON	
Sleep mode OFF	<input checked="" type="checkbox"/>
Done	

SLEEP MODE ON/OFF

12:37

< Back Mingfans air test mode

Program

Shutdown

-

+

Cooling Low wind

Current Temperature 27.5°C

Switch Mode Sleep mode Settings

ON/OFF

## FAN SPEEDS

Gear

Low wind	<input checked="" type="checkbox"/>
Mid wind	
High wind	
Automatic wind	
Done	



**Mingfans Air Ltd**

ALL ADVANCED SET UP  
REQUEST PASSWORD TO RESET  
FACTORY PASSWORD "123456"

4:15

< Back Settings

Child Lock ☐

time period programming >

Cloud timing >

The following content needs to enter a password to set

temperature calibration -1°C >

child lock type Full lock >

Set temperature limit 35°C >

Set lower temperature limit 5°C >

fan energy saving fan energy saving >

programming type 7 >

ADV. SETUP

4:01

< Back Settings

Child Lock ☐

time period programming >

Cloud timing >

Please enter a password

123456

Cancel Save

The following content needs to enter a password to set

temperature calibration -1°C >

child lock type Full lock >

Set temperature limit 35°C >

q w e r t y u i o p

a s d f g h j k l

z x c v b n m

123 space return

FAN ENERGY SAVE MODE (ECO MODE) WHEN TEMP REARCH FAN TURN OFF INSTEAD IN LOW SPEEDS  
TS SYSTEM RECOMMEND NOT SET TO ENERGY SAVE MODE SO VENTILATION CAN 24/7.